



Edison - Litek
Expert in Automotive Lighting

ELA-2 Single Lamp Series Datasheet



ELA-2 H7



ELA-2 9005/9006



ELA-2 H8/9/11

■ Description:

Headlamp ELA-2 Single Lamp series delivers unique brilliant light with outstanding efficiency and elegant design. It's able to meet requirements of output and stability due to it is developed and tested to withstand extreme environment conditions and wide range of temperature change. It also provides distinct optical performance and uniform light pattern. With ELA-2 Single Lamp series Headlamp, you will start to experience and enjoy the excellent adventure during driving time.

■ Features:

- Fan Cooling System
- Small Size, Applicable for most vehicles



Edison - Litek

Expert in Automotive Lighting

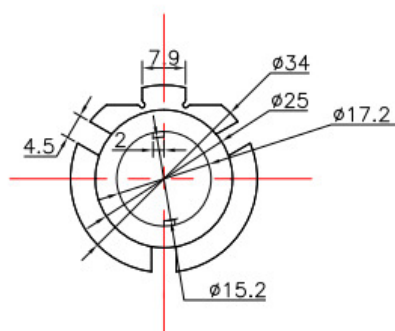
Characteristics

Parameter	Value	Units
Input Voltage	13.5	V
Power	30	Watt
Product type	Off-road	

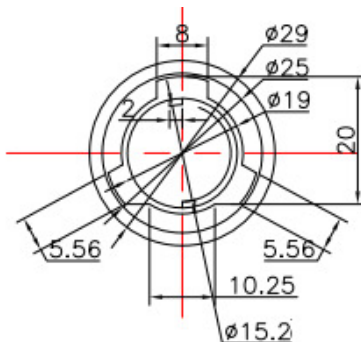
Electro-Optical Characteristics (Ta=25°C)

Part no.	Socket Type	Color	CCT(K) Typ.	Flux(lm) min.
7CAP100069	H7	Cool White	6000K	2600
7CAP100082	H8	Cool White	6000K	2600
7CAP100083	H9	Cool White	6000K	2600
7CAP100084	H11	Cool White	6000K	2600
7CAP100085	9005	Cool White	6000K	2600
7CAP100086	9006	Cool White	6000K	2600

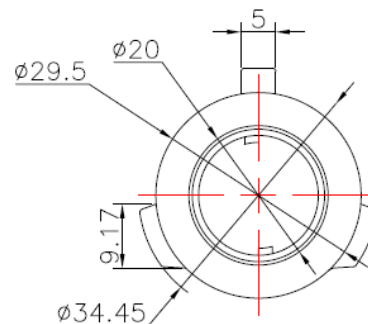
Mechanical Dimensions



H7



H8/H9/H11



9005/9006

Notes:

Unit: mm.

Tolerance: $\pm 0.2\text{mm}$



Edison - Litek
Expert in Automotive Lighting

Optical Characteristic

The pictures below shows the comparison between halogen and LED headlamp. It provides similar beam pattern with perfect match and elegant exterior design.

Halogen

High Beam



ELA-2 Single Lamp

High Beam



Revision History

Versions	Description	Release Date
1	Establish a Datasheet	2020/07/15