

---

# ELA-1 Series HS1 Datasheet



■ **Description:**

Headlamp ELA-1 HS1 series delivers unique brilliant light with outstanding efficiency and elegant design. It's able to meet requirements of output and stability due to it is developed and tested to withstand extreme environment conditions and wide range of temperature change. It also provides distinct optical performance and uniform light pattern. With ELA-1 HS1 series Headlamp, you will start to experience and enjoy the excellent adventure during driving time.

■ **Features:**

- Small Size, Applicable for most vehicles



**Edison - Litek**  
*Expert in Automotive Lighting*

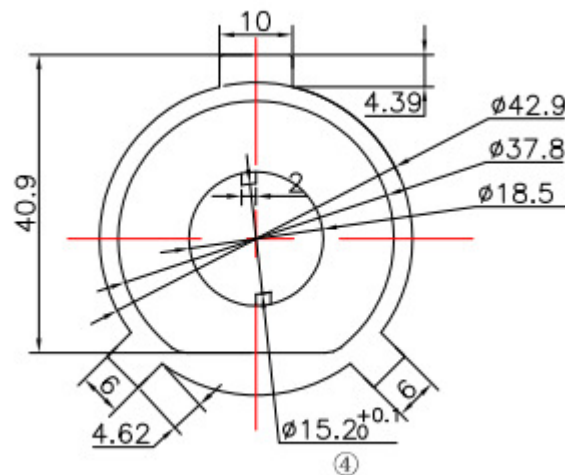
## Characteristics

Parameter	Value	Units
Input Voltage	13.5	V
Power	15	Watt

## Electro-Optical Characteristics (Ta=25°C)

Part no.	Color	CCT(K) Typ.	Flux(lm) min.	CRI
7CAP100056	Cool White	6500K	High Beam: 1600 Low Beam: 1000	70

## Mechanical Dimensions



Notes:

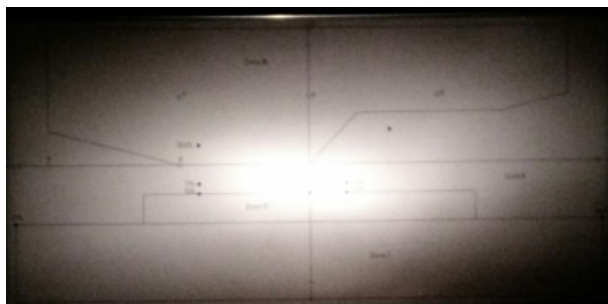
Unit: mm.

Tolerance:  $\pm 0.2\text{mm}$

## Optical Characteristic

High/Low beam design of Edison-Litek ELA-1 series HS1 is compatible with traditional halogen, especially the light pattern. The pictures below shows the comparison between halogen and LED headlamp. It provides similar beam pattern with perfect match and elegant exterior design.

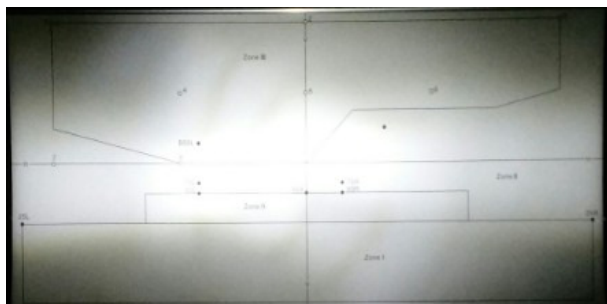
**Halogen**  
High Beam



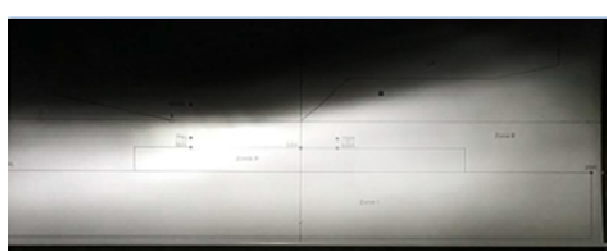
Low Beam



**ELA-1 HS1**  
High Beam



low Beam



## Revision History

Versions	Description	Release Date
1	Establish a Datasheet	2020/01/09